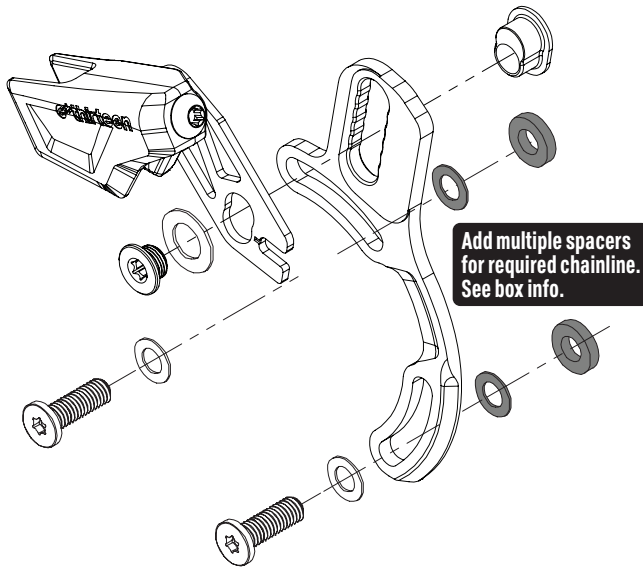


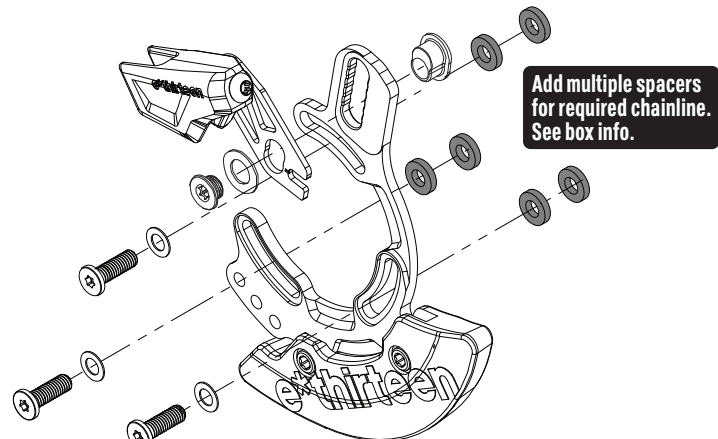


## Trail 2-Bolt



Add multiple spacers for required chainline. See box info.

## Enduro



Add multiple spacers for required chainline. See box info.

36T Max Direct Mount Bashguard



32T Max Direct Mount Bashguard

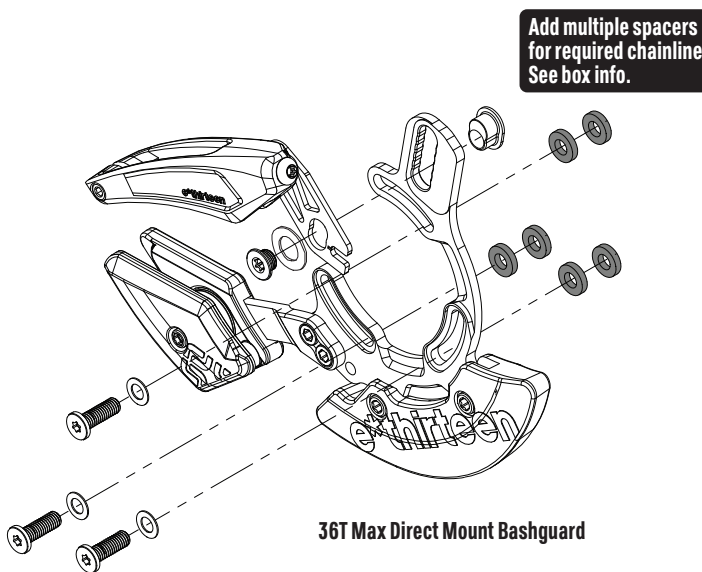


Tighten all bolts at installation to required torque!

10mm	15mm	0.5mm	1mm	2.5mm	7.5mm

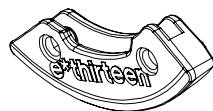
- Install backplate spacers per chainline and ISCG-05 tab offset requirements.
- When combined spacer thickness is 3mm or more, use 15mm bolts.

## Downhill



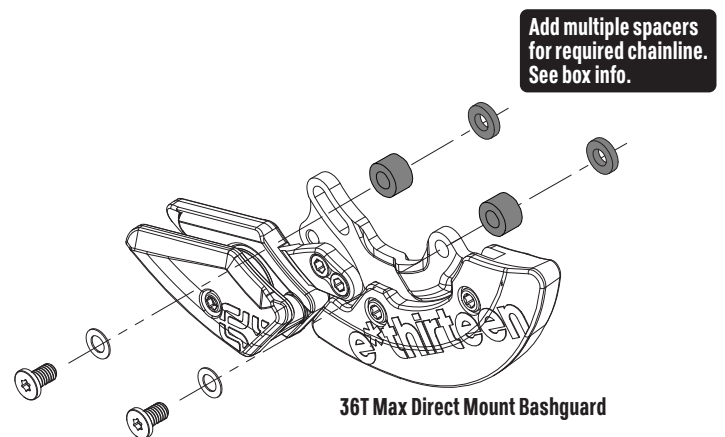
Add multiple spacers for required chainline. See box info.

36T Max Direct Mount Bashguard



32T Max Direct Mount Bashguard

## Bottom only



Add multiple spacers for required chainline. See box info.

36T Max Direct Mount Bashguard



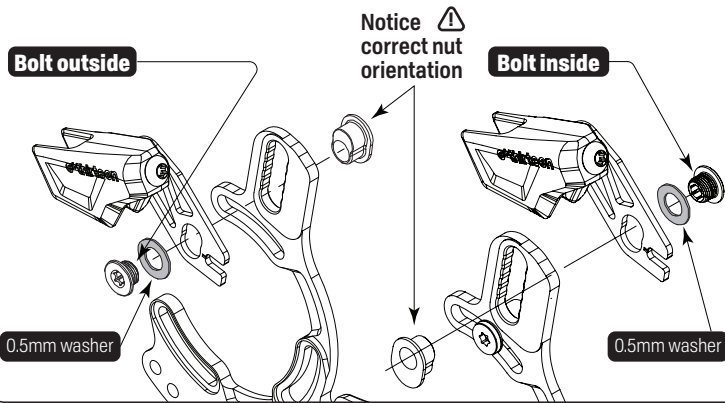
32T Max Direct Mount Bashguard





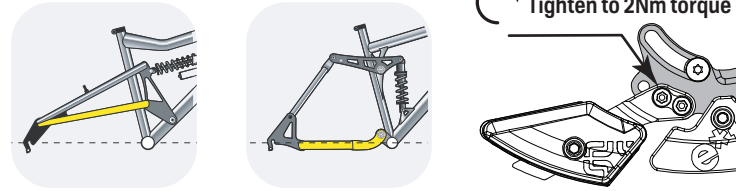
## UPPER ARMATURE POSITION

Narrow chain lines and wide ISCG tabs may require moving the upper armature inboard of the backplate.



## LOWER ARMATURE POSITION

### NARROW POSITION (NORMAL)



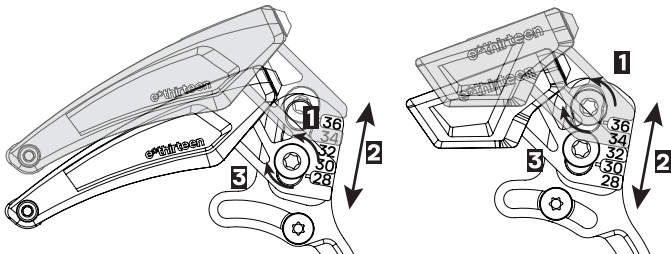
### WIDE POSITION (BIKES WITH DROPPED CHAINSTAYS)



## VERTICAL ADJUSTMENT

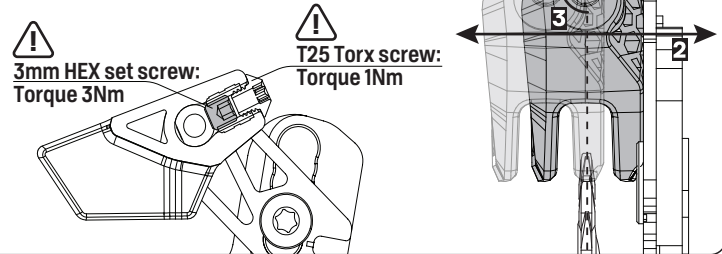
1. LOOSEN T25 Torx screw
2. MOVE window to correct tooth count
3. TIGHTEN T25 Torx screw to 6Nm

Make sure 0.5mm washer is installed



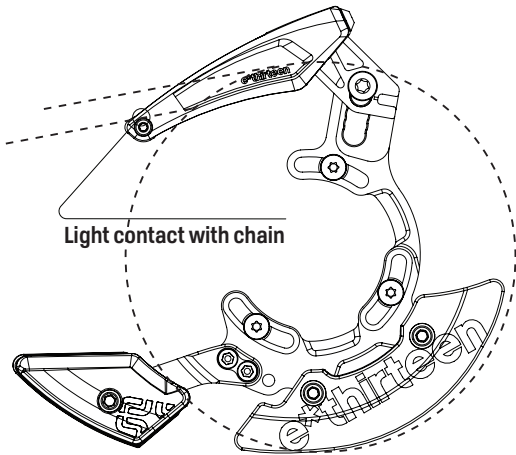
## HORIZONTAL ADJUSTMENT

1. LOOSEN 3mm HEX set screw *inside* the T25 Torx screw
2. ALIGN slider with chainring
3. TIGHTEN 3mm HEX set screw to 3Nm



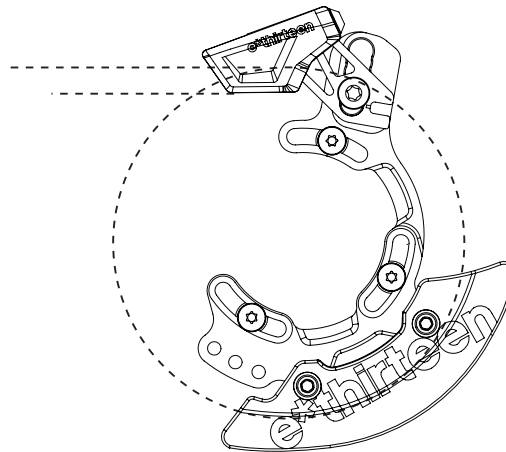
## FULL COVERAGE CLOCKING

NO SAG & CHAIN ON SMALLEST COG.



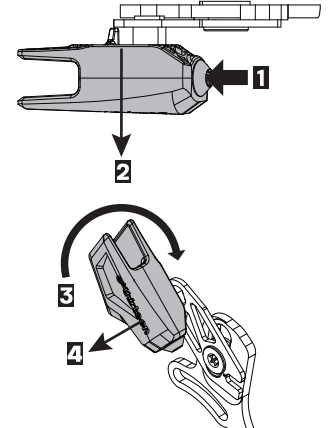
## ULTRA COMPACT CLOCKING

CHAIN AND BOTTOM OF SLIDER PARALLEL AT SAG



## UPPER GUIDE REMOVAL

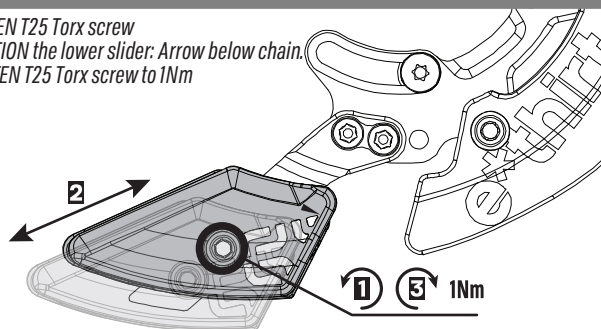
1. LOOSEN *inside* 3mm HEX set screw
2. MOVE chain guide block outwards
3. ROTATE block clockwise to front
4. SLIDE guide off the pin



## LOWER SLIDER - CHAIN TENSION

1. LOOSEN T25 Torx screw
2. POSITION the lower slider: Arrow below chain.
3. TIGHTEN T25 Torx screw to 1Nm

ALIGN ARROW WITH BOTTOM OF CHAIN



## TORQUE SPEC

