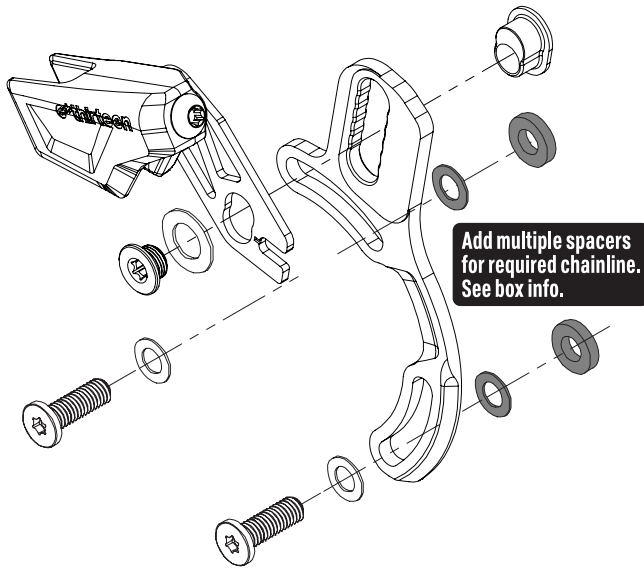
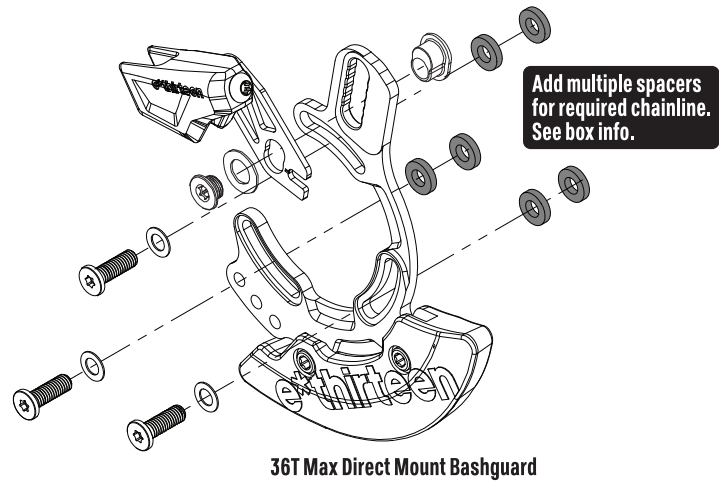


Trail 2-Bolt



Enduro



32T Max Direct Mount Bashguard

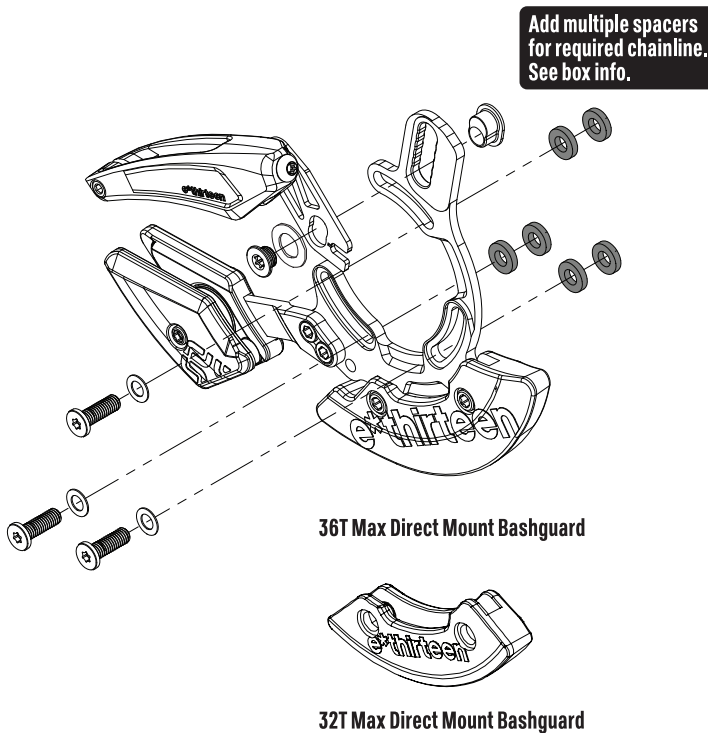


Tighten all bolts at installation to required torque!

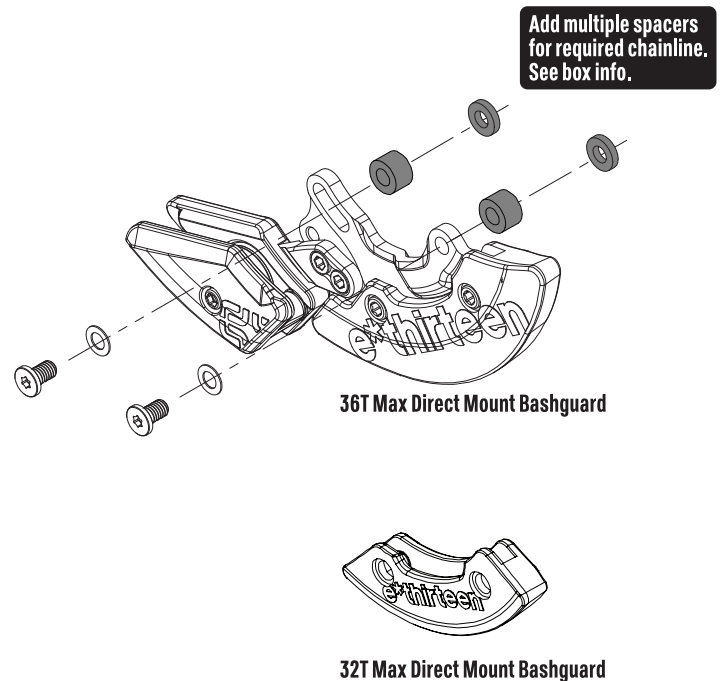
10mm	15mm	0.5mm	1mm	2.5mm	7.5mm

- Install backplate spacers per chainline and ISCG-05 tab offset requirements.
- When combined spacer thickness is 3mm or more, use 15mm bolts.

Downhill

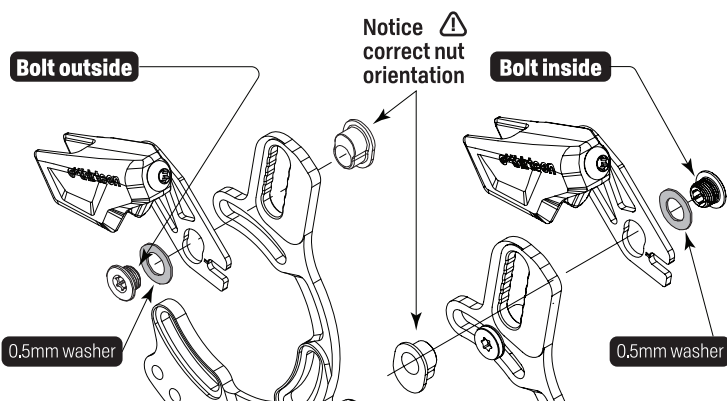


Bottom only



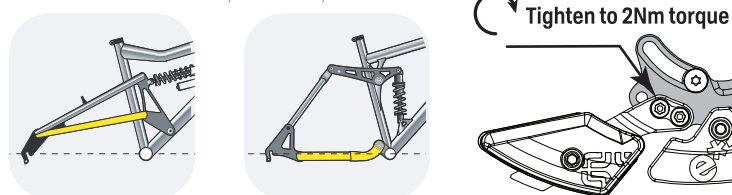
UPPER ARMATURE POSITION

Narrow chain lines and wide ISCG tabs may require moving the upper armature inboard of the backplate.

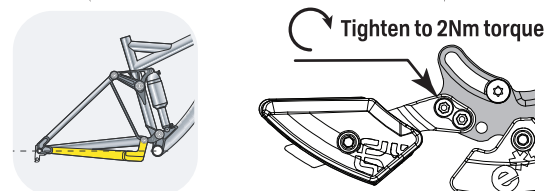


LOWER ARMATURE POSITION

NARROW POSITION (NORMAL)



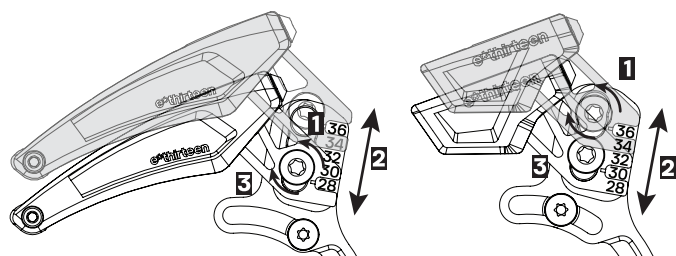
WIDE POSITION (BIKES WITH DROPPED CHAINSTAYS)



VERTICAL ADJUSTMENT

1. LOOSEN T25 Torx screw
2. MOVE window to correct tooth count
3. TIGHTEN T25 Torx screw to 6Nm

Make sure 0.5mm washer is installed

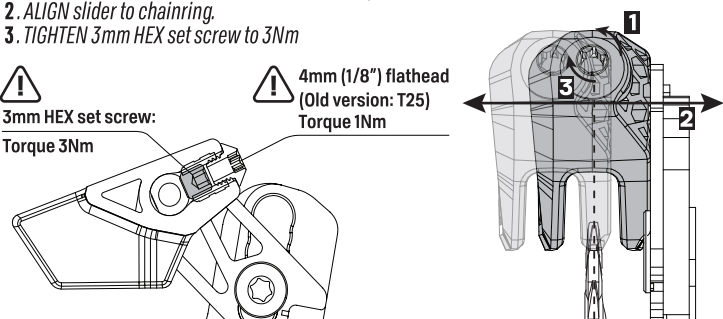


HORIZONTAL ADJUSTMENT

1. LOOSEN 3mm HEX set screw hidden *inside* cap screw.
2. ALIGN slider to chainring.
3. TIGHTEN 3mm HEX set screw to 3Nm

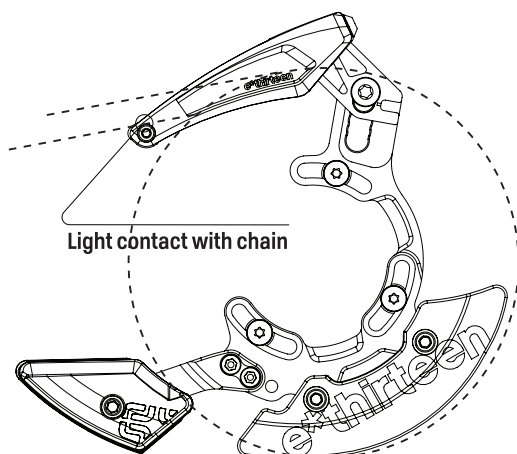
3mm HEX set screw:
Torque 3Nm

4mm (1/8") flathead
(Old version: T25)
Torque 1Nm



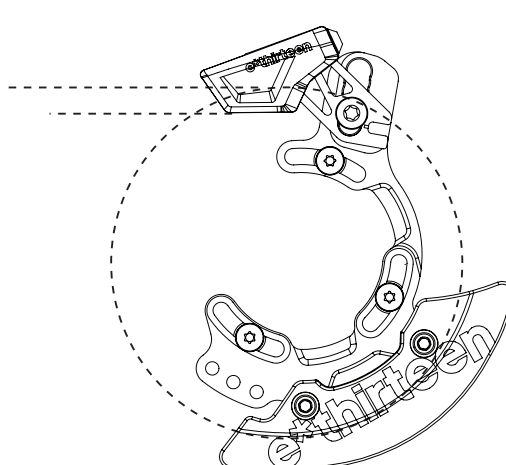
FULL COVERAGE CLOCKING

NO SAG & CHAIN ON SMALLEST COG.



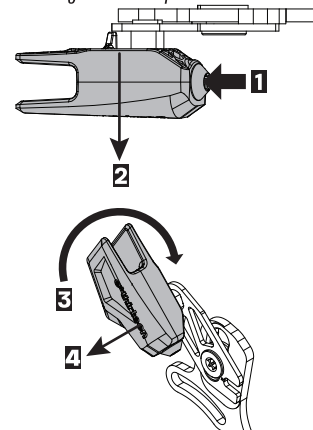
ULTRA COMPACT CLOCKING

CHAIN AND BOTTOM OF SLIDER PARALLEL AT SAG



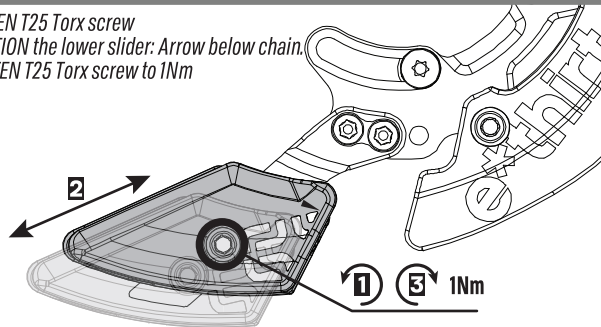
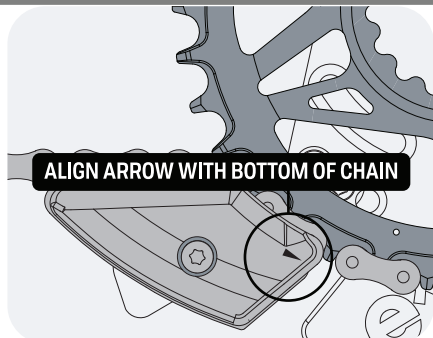
UPPER GUIDE REMOVAL

1. LOOSEN *inside* 3mm HEX set screw
2. MOVE chain guide block outwards
3. ROTATE block clockwise to front
4. SLIDE guide off the pin



LOWER SLIDER - CHAIN TENSION

1. LOOSEN T25 Torx screw
2. POSITION the lower slider: Arrow below chain.
3. TIGHTEN T25 Torx screw to 1Nm



TORQUE SPEC

