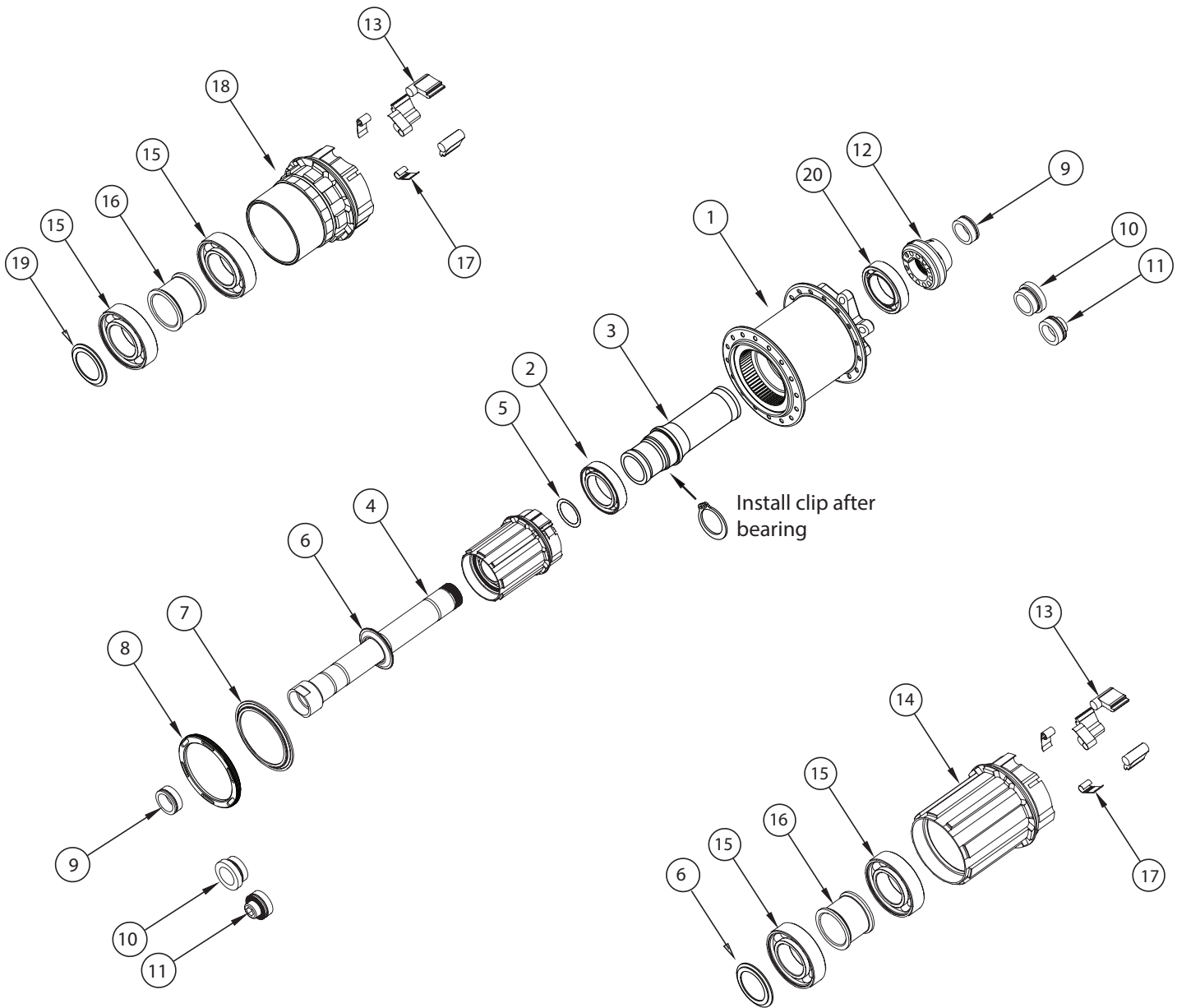


e*thirteen LG1^R REAR hub service part diagram

Part Number	Description	Item# (Quantity)
N/A	TRS Race hub body	1
HBA.LR20-5057.S	Gen 2 hub axle * fits all LG1 Race hubs *incl. axle reducer, endcap, endcap inserts, spacer cap*	3(incl clip), 4, 5, 6, 9(2), 10(2),11(2), 12
HBE.G20-UNV.K	Gen 2 hub axle * fits all Gen 2 axle systems * incl. 142x12, 135x12, and 135QR endcap inserts *	9(2), 10(2), 11(2)
HBB.6804T-2032.N	e*thirteen hub body bearing fits DS TRS/LG1 Race, DS and NDS TRS/LG1 Plus rear hubs incl. 1x 6804 20x32 radial bearing	2
HBB.6902T-1528.N	e*thirteen hub body bearing fits NDS TRSr/LG1r rear hubs incl. 1x 6902 15x28 radial bearing	20
HBF.UNV-6D.K	6 degree freehub kit * fits all e*thirteen hubs * incl. freehub assm, spacer, seal, and lockring * black	5,6,7,8,14,15(2),16, 13(3),17(3)
HBB.BR6902A-UNV.N	Freehub body bearing kit * fits all e*thirteen hubs * incl. 2x6902 bearings and 1 spacer *	15(2), 16
HBF.UNV-REF.N	Refresh freehub kit * fits all e*thirteen hubs * incl. pawls, springs, seal, and lockring *	7,8,13(3),17(3)
HBF.UNV-XD6D.K	XD driver 6 degree freehub kit * fits all e*thirteen hubs * incl. freehub assm, spacer, seal, and lockring * black	5,7,8,13(3),15(2), 16, 17(3),18,19



*Please Note: Part 6 is not used with the XD driver configuration