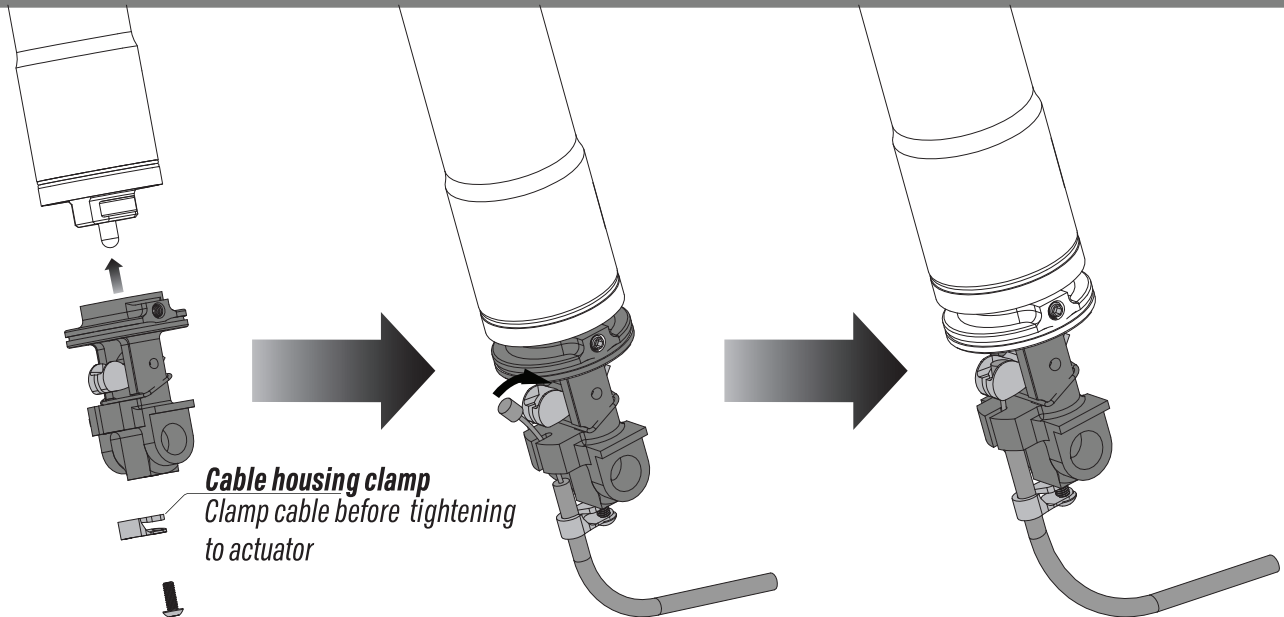


VARIO COVERT

INFINITE DROPPER POST

Step 1. Route housing thru frame



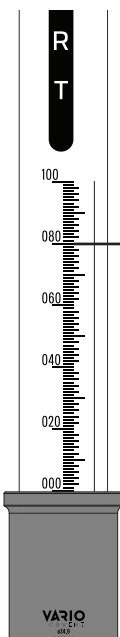
Cable housing clamp
Clamp cable before tightening to actuator

**Pull the outer cable through the frame first*

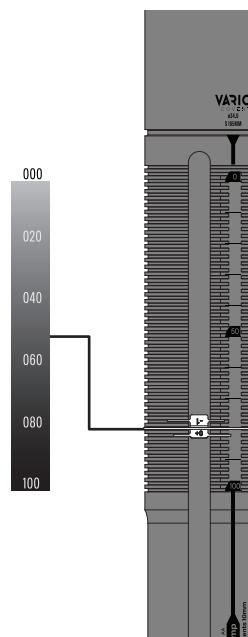
**Pull cable tight from remote-end and then anchor cable in remote*

Step 2. Saddle height adjustment

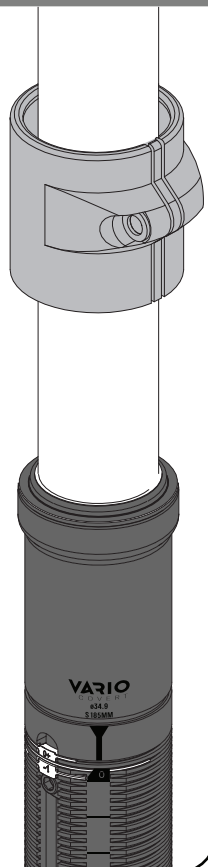
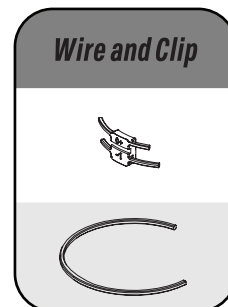
**Moving travel limiter clip will adjust desired saddle height*



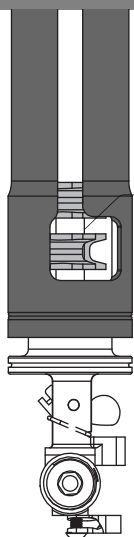
-EXTENSION LIMITER
Place in grooves and slot of fixed tube to limit maximum extension (travel) in 1mm increments.
***Notice:**
-Each hash mark represents 10mm
-Flipping Extension limiter upside down will decrease height -1mm



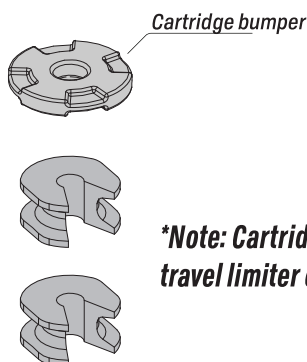
5-7Nm



Step 3. Travel limiter

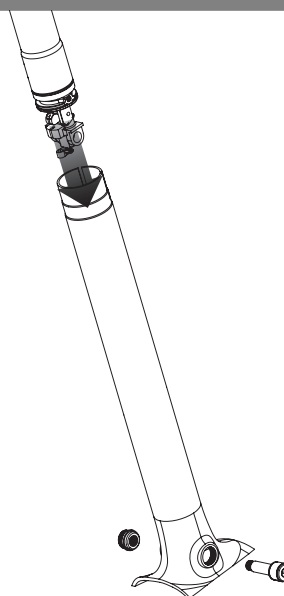


Add travel limiter from fixed tube window



***Note:** Cartridge bumper must be positioned above travel limiter clip. A maximum of 2 travel limiter clips can be used

Step 4. Frame bolt

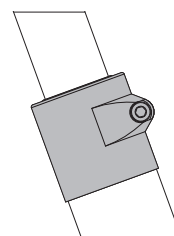


-INSERT SEATPOST

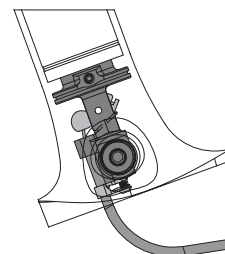
Insert seat post to the frame tighten frame bolt to the actuator.

***Notice:**

- cable side must be toward the rear wheel.
- tighten seatpost collar after assembling frame bolt.



FRONT

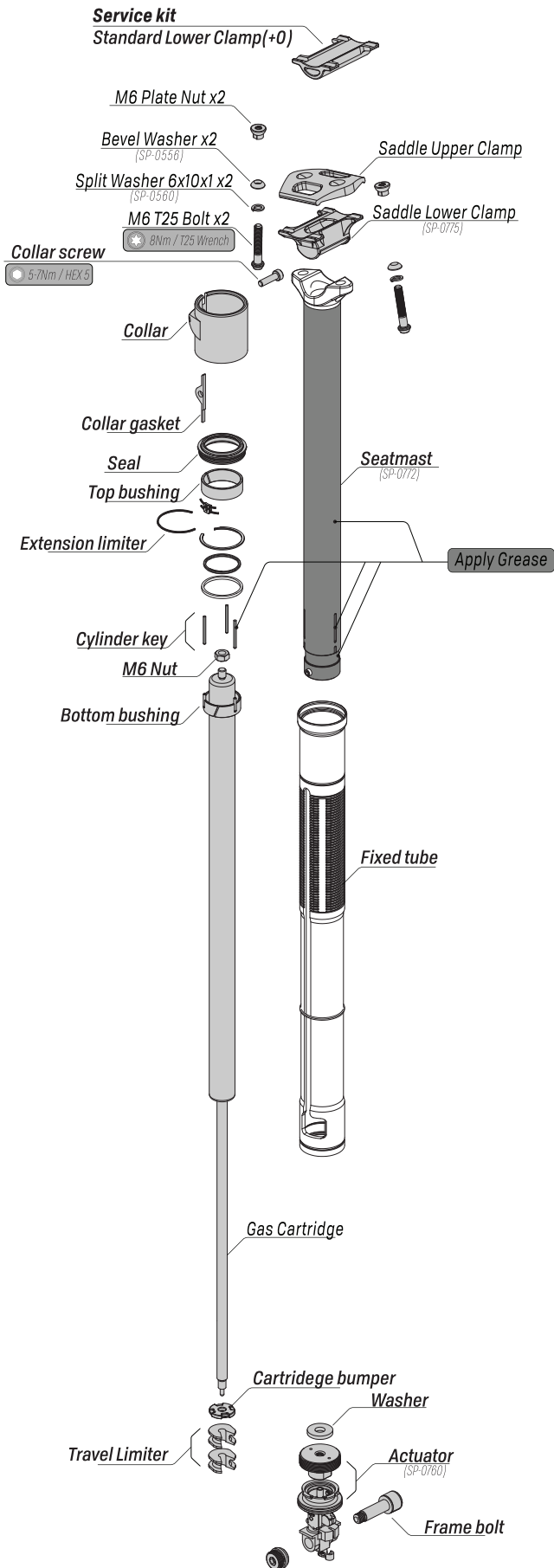


⚠ WARNING ⚠

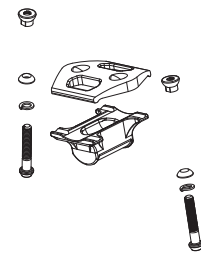
The following warnings are **EXTREMELY IMPORTANT!** Please take some time to read through these warnings clearly and make sure you understand them before using the dropper seatpost. If you have questions about any of the below or the installations, please contact us immediately. Ignoring or failure to do so may cause a serious malfunction that often leads to serious injury or death.

- Ensure the seat post diameter is correct and follows the specifications of your frame. Diameter mismatching will result in slippage or failure, causing serious injury or death.
- Always make sure that the saddle is already installed onto the saddle clamp, and correctly tightened before activating the remote lever. Avoid looking directly on top of the head tube when activating lever or release mechanism.
- When finished adjusting the Adjustable Travel Bushing, always make sure nothing is in the way of the Upper Tube and the alignment is straight and well when inserting back to the Outer Tube. Stop pushing in when feeling resistance and seek preferred bicycle shop with this manual for assistance. Failing to do so may cause damage to the internals of the seat post and malfunction.
- Always make sure nothing is in the way of the seat tube when the seat post is inserted into the frame. Forcing the seat post into the frame when feeling resistance could cause damage to the frame. Especially with some full-suspension design frames, pivots or bends in the seat tube could prohibit the post from being inserted to the desired height.
- Always ensure Seatpost Collar is fully tightened after adjusting the Adjustable Extension limiter, and before riding.
- Always keep the upper tube clean and lubricated before riding for optimal performance.
- Keep the seat post in fully extended (up) position when storing for extended periods.
- Always have an experienced bicycle mechanic in your preferred bicycle shop to perform the installation of the seat post with this manual.
- Following any crash, please have a certified mechanic inspect your seat post and bike for damage to ensure the seat post is still safe to ride.
- Always wear a helmet and ride within your limits.

Vario seatpost



Service kit



1/ Head hardware

- Upper Clamp
- Lower Clamp/ Standard Lower Clamp (+0)
- screws and nuts



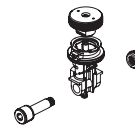
2/ Refresh kit

- seal
- keys
- bushing top and bottom
- extension limiter clip, o-rings, wire
- collar gasket



3/ Actuator

- base
- tower
- bolts



4/ Replacement cartridge (1 each size)

- nut
- cartridge
- cartridge bumper
- travel limiter
- washer



Troubleshooting

1. MEASURE YOUR FRAME INSERTION
2. SELECT LONGEST VARIO COVERT THAT YOUR FRAME WILL ACCEPT
3. INSTALL YOUR POST

-SADDLE GOES TOO LOW (Add TRAVEL LIMITER)

-SADDLE GOES TOO HIGH (ADJUST EXTENSION LIMITER)

-YOU NEED - 1mm OF TRAVEL ADJUSTMENT (FLIP THE BLOCK)

-YOUR INNER TUBE WON'T INSERT FULLY (GET SMALLER SIZE VARIO COVERT)

-CARTRIDGE EXTEND SPEED TOO SLOW

1. add tension on the cable, turn the barrel adjuster Counterclockwise.

2. if 1 does not work, then turn the base outward.

****REMOVE EXTENSION LIMITER BEFORE ADJUST****

-DROPPER POST IS MOVING WITHOUT PRESSING THE LEVER:

1. release tension on the cable, turn the barrel adjuster clockwise

2. if 1 does not work, then turn the base inward.

